

delta 2000 LD



www.ilapak.com



PACKAGING MACHINERY

TECHNICAL SPECIFICATIONS

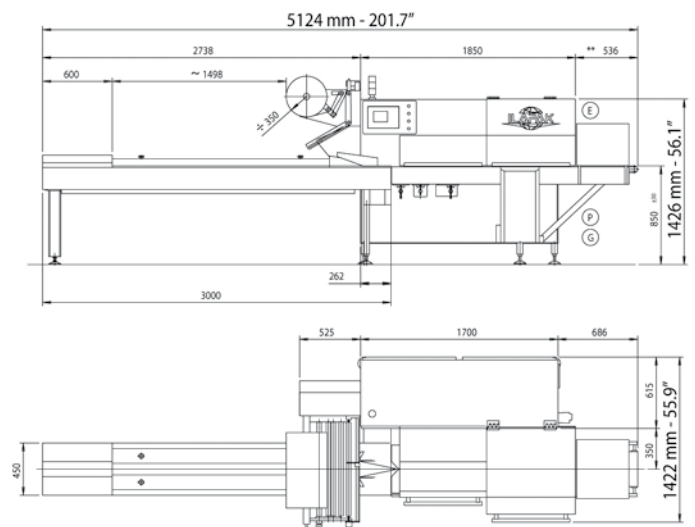
Machine speed	Up to 60 cycles per minute Production output depends on film sealability and product characteristics.
Product dimensions	
LENGTH	Up to 600mm - 24"
WIDTH	300mm - 12" (jaws 345mm - 13.6")
HEIGHT	Up to 110mm - 4.0" standard (centre-axle 180) Up to 140mm - 5.5" on request (centre-axle 215)
Film cut off	Min 100mm - 4" / Max 650mm - 26" Depending on film and product characteristics.
Wrapping materials	Shrink barrier films, laminated, co-extruded and all sealable films
Film reel dimensions	
CORE Ø	76.2mm - 3" standard 152.4mm - 6" on request
OUTER Ø	350mm - 13.8" standard 400mm - 15.7" on request (auto-splicer only)
WIDTH	800mm - 31.5" standard 500mm - 19.7" standard (wet-wipes only) 650mm - 25.6" on request 900mm - 35.4" on request
Film reel max weight	Depending on film reel width, up to 75 kg - 165 lbs
Electronic platform	Industrial PC For USA & Canada, in particular, Allen Bradley platform available.
Power requirement	From 220 to 480 V, 50/60 Hz, 5kVA
Compressed air	6 bar, 200l/min
Machine weight	1200 Kg - 2700 lbs

MAIN STANDARD FEATURES

- Long-dwell sealing head to optimize sealing cycle.
- 3 servo motors to control infeed, rollers, jaws (additional motors with automatic feeders).
- User friendly operator interface with intuitive icons on 10" colour VGA touch screen.
- 128 programs (additional memory on request).
- Automatic product size change.
- Integrated temperature control.
- Electronic diagnostic on-board.
- No product/ no bag.
- Misplaced product detection system.
- I/O for peripheral units (printer, labelers, gas control, etc.)
- Single film reel mounting with self-centering cones, right hand machine version, 3m long infeed, standard.
- Robust, hygienic, easy to clean design, stainless steel finishing standard.

Please discuss your needs with our local representative to configure these machines to your product's specific requirements.

ILAPAK is ISO 9001:2000 certified



All measurements not specified in inches are given in millimeters.

These specifications are not binding. We reserve that right to change them without prior notice.